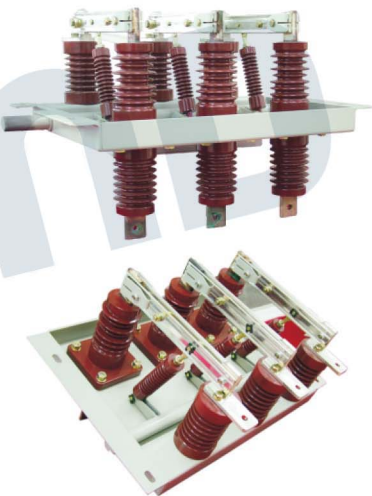


GN□-12 Indoor AC High Voltage Disconnect Switch

Summary

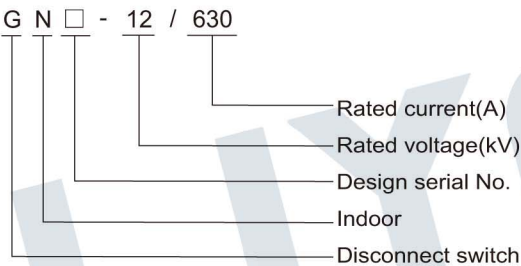
GN□-12 disconnect switch is an indoor electric apparatus of rated voltage 12kV, three-phase AC 50/60Hz. It is especially applicable in small switch cubicle occupying small space. The switch interlock well (the main blade and earthing blade can not close simultaneously), operate easily and reliably.



Ambient condition

- 1. Altitude: ≤1000m;
- 2. Ambient temperature: -25℃~+40℃;
- 3. Relative humidity: daily average ≤95%, monthly average ≤90%;
- 4. Earthquake intensity: ≤8 degree;
- 5. Applicable occasions should free from inflammables, explosives, corrosives and severe vibration.

Model



Product feature

- 1. Scientific design and innovative structure.
- 2. Small volume and light weight.
- 3. Easy maintenance and long service life.
- 4. The main blade and earthing blade are interlock well to avoid simultaneous operation.

Technical specification

Item		Unit	Data	
Rated voltage		kV	12	
Rated frequency		Hz	50/60	
Rated current		A	630	1250
Rated short-time withstand current		kA	20	31.5
Rated peak withstand current		kA	50	80
Rated short-circuit duration		s	4	
Rated insulating level	1min. PF withstand voltage	kV	phase to phase/ to earth: 42, across open contacts: 49	
	Lightning impulse withstand voltage(peak)	kV	phase to phase/ to earth: 75, across open contacts: 85	

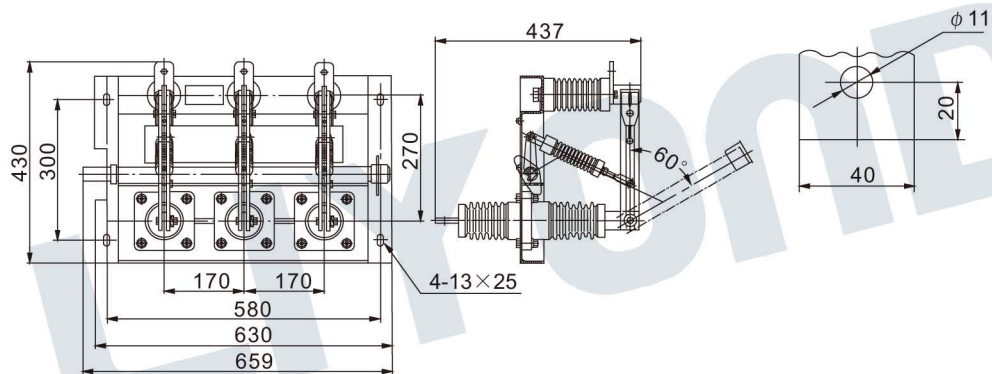


Diagram 1 GN□-12/630 Indoor high voltage disconnect switch

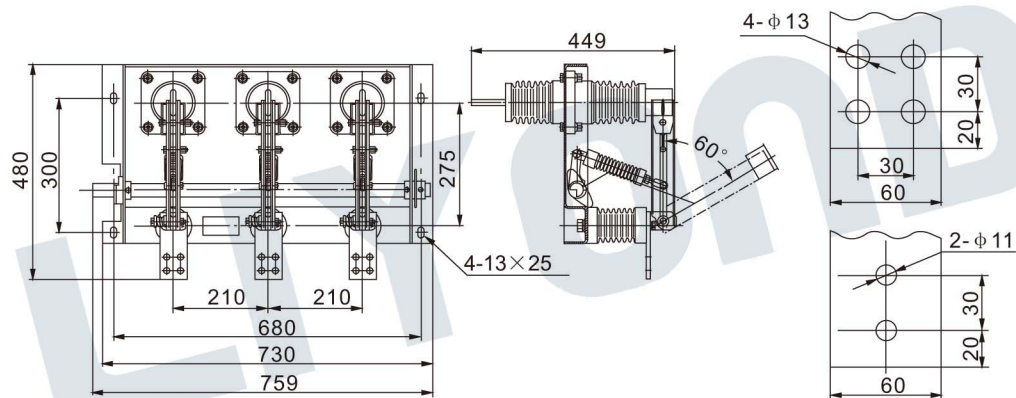


Diagram 2 GN□-12/1250 Indoor high voltage disconnect switch