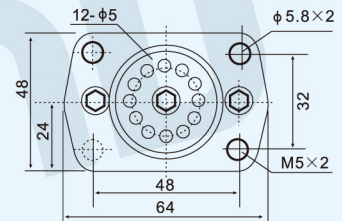
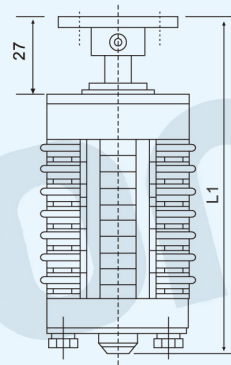


LIYOND

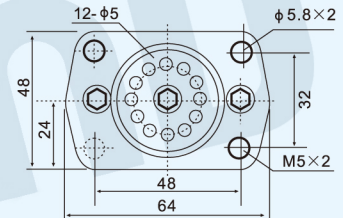
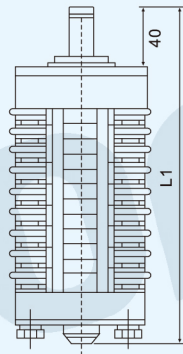
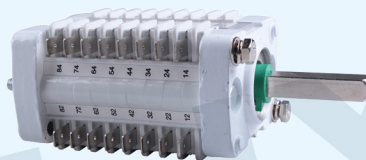
AUXILIARY SWITCH SERIES

Model No.:F10-12
Name:Auxiliary switch



Normally open & normally closed	2	3	4	6	8
Baffle number	3	4	5	7	9
L1(mm)	75	82	89	103	117

Model No.:F10-16
Name:Auxiliary switch



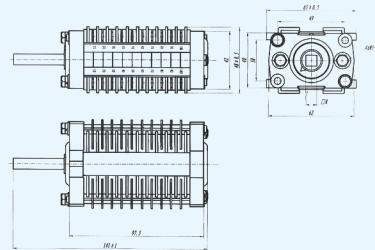
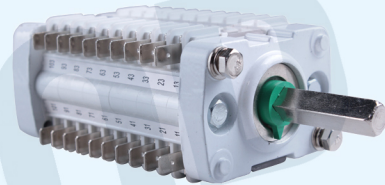
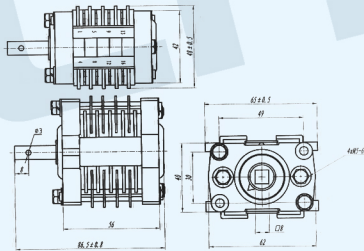
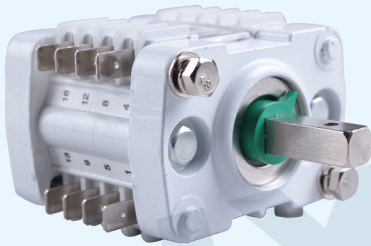
Normally open & normally closed	2	3	4	5	6	7	8	9	10	11
Baffle number	3	4	5	6	7	8	9	10	11	12
L1(mm)	89	96	103	110	117	124	131	138	145	152

LIYOND

AUXILIARY SWITCH SERIES

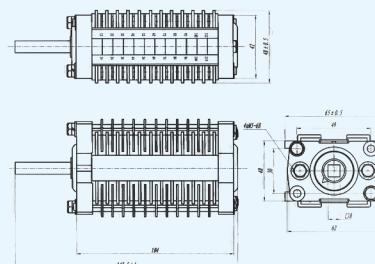
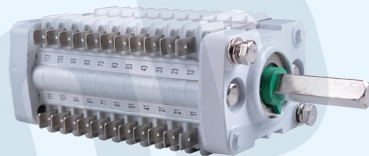
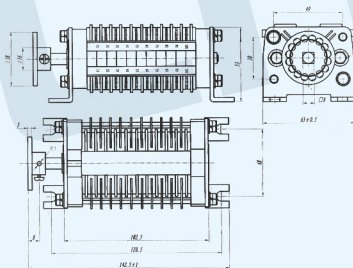
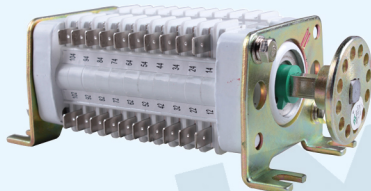
Model No.: F10-8
Name: Auxiliary switch

Model No.: F10-20
Name: Auxiliary switch



Model No.:F10-20 III W4
Name:Auxiliary switch

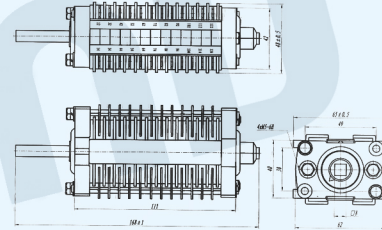
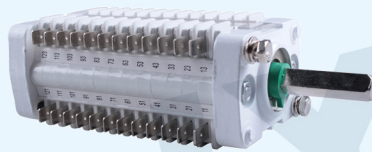
Model No.:F10-22
Name:Auxiliary switch





AUXILIARY SWITCH SERIES

Model No.:F10-24
Name:Auxiliary switch



China auxiliary switch rotary type F10-24

Item No: F10-24

Main application:

This series applies to the HV operating mechanisms switching on, switching off, interlock, and controlling of signal circuit. It also applies to HV switchgears, and can be used as transfer switch or cubicle switch.

Working Conditions:

1. Ambient temperature: not higher than +40 °C, not less than -40°C
2. Altitude: not exceed 2000m.
3. Relative humidity: daily average of not more than 95%, month average of not more than 90%. Saturated vapor pressure daily average of not more than 2.2×10^3 MPa, month average not more than 1.8×10^3 MPa.
- 4.The acceleration is not greater than 15m/ square seconds;
- 5.The air is not significantly affected by dust, smoke, corrosive and flammable gas, steam or salt fog contamination.